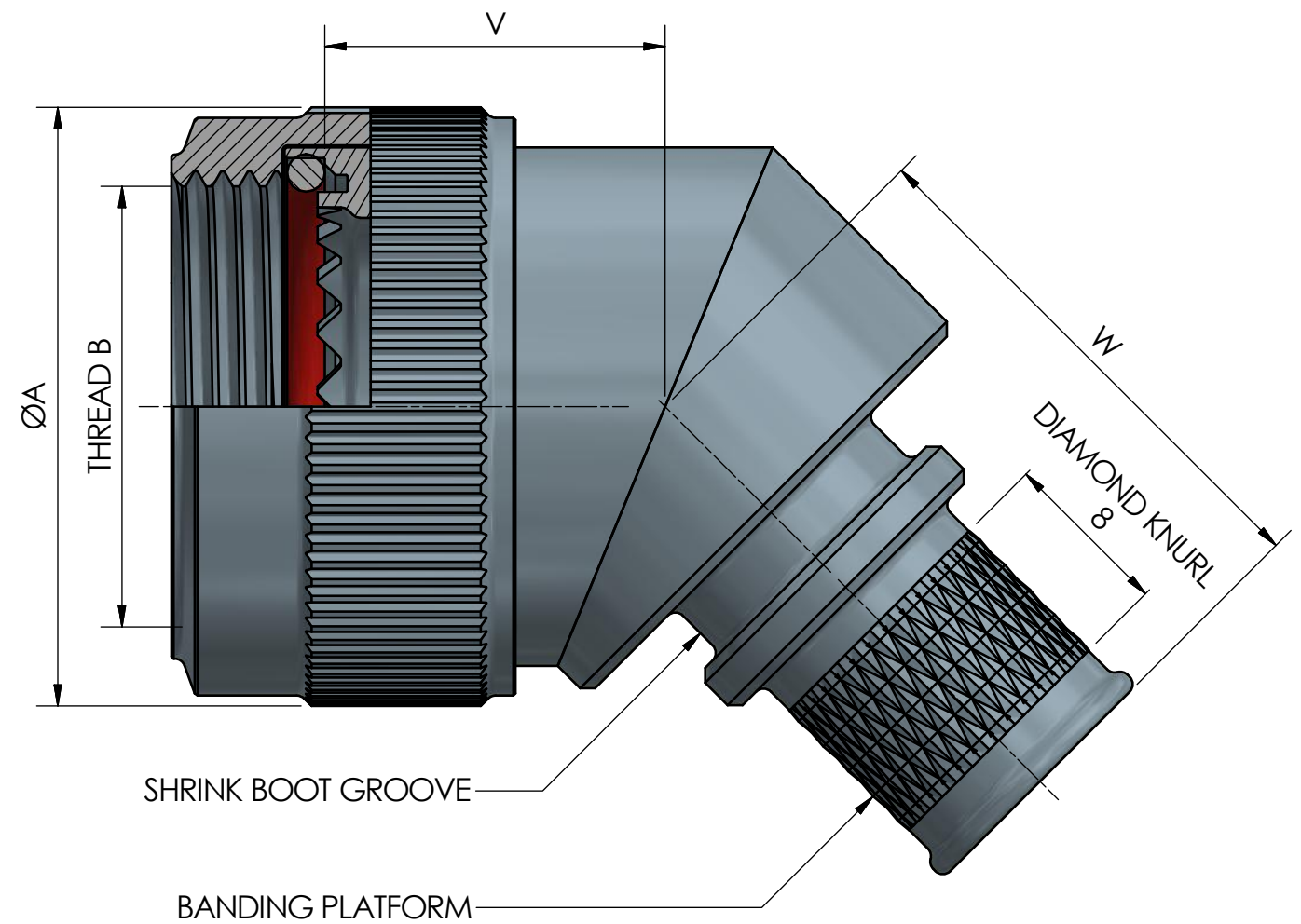
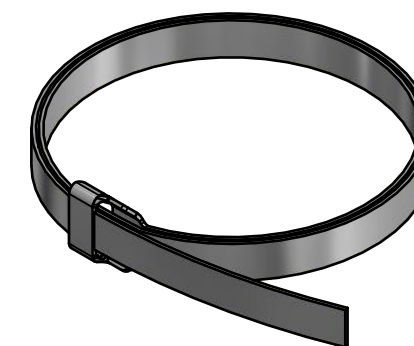
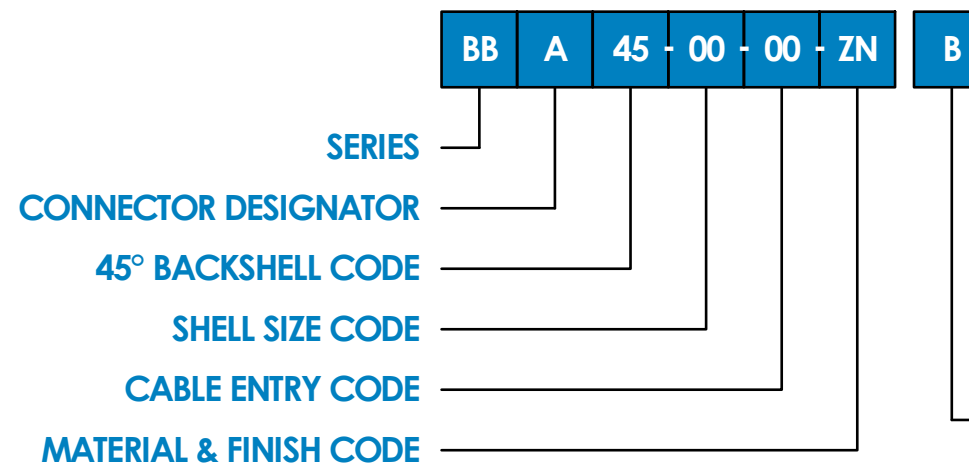


SHELL SIZE AND ENTRY TABLE							
SHELL SIZE CODE	ØA	THREAD B	ENTRY CODE	ID	OD	V	W
08	19	½" - 20 UNF	05	5	12	14	23
			09	9	16		
10	22	5/8" - 24 UNF	06	6	13	15	24
			12	12	19		
12	25	3/4" - 20 UNEF	08	8	15	15	24
			15	15	22		
14	28	7/8" - 20 UNEF	09	9	16	16	25
			18	18	25		
16	32	1" - 20 UNEF	15	15	22	17	26
			22	22	29		
18	33	1 1/16" - 18 UNEF	16	16	23	17	26
			23	23	30		
20	36	1 3/16" - 18 UNEF	19	19	26	18	27
			26	26	33		
22	39	1 5/16" - 18 UNEF	22	22	29	18	27
			29	29	36		
24	42	1 7/16" - 18 UNEF	26	26	33	19	28
			32	32	39		
28	50	1 3/4" - 18 UNS	32	32	39	20	30
			38	38	45		
32	57	2" - 18 UNS	38	38	45	22	31
			44	44	51		
36	63	2 1/4" - 16 UN	44	44	51	23	32
			50	50	57		
40	69	2 ½" - 16 UN	49	49	56	24	34
			55	55	62		
44	76	2 3/4" - 16 UN	55	55	62	26	35
			62	62	69		
48	82	3" - 16 UN	62	62	69	27	36
			68	68	75		



MATERIAL AND FINISH TABLE		
CODE	MATERIAL	FINISH
CD	6061 T6 ALUMINIUM	CADMIUM OLIVE DRAB OVER ELECTROLESS NICKEL
F	6061 T6 ALUMINIUM	ELECTROLESS NICKEL
W	6061 T6 ALUMINIUM	ZINC NICKEL OLIVE DRAB OVER ELECTROLESS NICKEL
ZN	6061 T6 ALUMINIUM	ZINC NICKEL BLACK OVER ELECTROLESS NICKEL
S	316 STAINLESS STEEL	PASSIVATED
C	CUSTOM	CUSTOM



ADD B TO THE END OF THE PART# TO INCLUDE A BANDING STRAP

ALL DIMENSIONS IN MILLIMETERS	DO NOT SCALE	DOCUMENT TITLE: 45 DEGREE BANDING BACKSHELL DATA SHEET	
<p>3RD ANGLE PROJECTION</p>	GENERAL TOLERANCES		DOCUMENT ID: TEL-BBA45-DS
	X	= ± 0.5	REV: 02
	X.X	= ± 0.1	
	X.XX	= ± 0.05	
∠	= ± 1°		



CONNECTOR DESIGNATOR:	A
BACKSHELL USED ON:	CHECK CONNECTOR DESIGNATOR TABLE FOR CONNECTOR COMPATIBILITY
BACKSHELL SERIES:	BANDING BACKSHELL
SERIES NUMBER:	BB